

CTSI Coordinator Connect

A product of the Clinical and Translational Science Institute (CTSI) at the University of Pittsburgh



IN THIS ISSUE

- Translational Workforce Development Catalog
- Funding Opportunities
- CTSI Updates
- Regulatory Notes: Office for Human Research Protections Conducting an Exploratory Workshop on Artificial Intelligence and Ethics
- Upcoming Events
- Dear CTSI: Educational Opportunities

Issue 28, Summer 2024

RESEARCH RESOURCES |

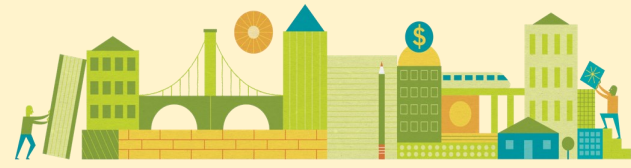
Translational Workforce Development (TWD) Catalog

The Georgia Clinical & Translational Science Alliance and Southern California Clinical and Translational Science Institute have collaborated to provide free certificate programs for clinical research professionals at novice to expert levels of experience.

[The Translational Workforce Development \(TWD\) Catalog](#) provides continuing education (CE) / contact hours from an approved accreditor. At the completion of each course participants earn a certificate and on completion of a program, made up of multiple courses, a badge. A one-time registration to the TWD Catalog provides access to all current and future courses at no charge.

A sampling of the educational opportunities includes the following:

- **Emerging Technologies in the Medical Device Industry:** This program, comprised of five courses, features industry and academic experts discussing the role and impact of technological advancements in the medical device industry.
- **Regulatory Aspects of Clinical Trial Design:** Topics include principles and methodologies used in study design, implementation, and analysis of clinical trials, ethical issues related to medical device development, and an overview of the FDA's evolution to become the nation's leading authority for regulatory oversight.
- **Conducting Clinical Trials: Emerging Technologies and Treatment Programs:** This program explores the regulatory, scientific, and logistical considerations in clinical trials involving emerging technologies, cutting-edge devices, immunotherapies, gene therapies, and stem cell therapies.
- **Clinical Research Career Pathways:** In this program, experts from the medical device industry and academic medical institutions will provide comprehensive insights into various clinical research fields, and necessary core competencies for professional growth and pathway advancement. At the end of this program, participants will gain perspectives in various clinical research fields, and the required skill sets, background experiences, education, and resume building skills to acquire positions as a clinical research professional.
- **Understanding Clinical Research Management at Academic Institutions:** This course provides an overview of the resources and infrastructure required to successfully operate industry-sponsored, grant-funded, and investigator-initiated clinical trials at an academic medical institution.
- **The Legal Aspects of Conducting Clinical Trials:** This program offers perspectives from attorneys and regulatory experts to discuss U.S. and international regulations for pharmaceutical, biologic and medical device organizations, as well as sponsored and investigator-sponsored trials.



FUNDING OPPORTUNITIES

Request for Proposals Opportunity: UPMC Enterprise Translational Sciences – Researchers Focusing on the Central Nervous System, Inflammation & Immunology, or Metabolic Disease Welcome Submit Pre-Proposal by September 6

This request for proposals (RFP) is an initiative sponsored by the Translational Sciences division at UPMC Enterprise to accelerate the development of transformative life sciences discoveries at the University of Pittsburgh and UPMC. Pre-proposals will be accepted on Pitt InfoReady until September 6, 2024. Sponsored research funding of up to \$1 million per year for up to two years is available. This opportunity is open to University of Pittsburgh investigators conducting research in the following areas:

Central Nervous System

Technologies, approaches, or platforms that improve delivery of next-generation therapeutics to the brain

Disease-modifying therapies for defined patient populations with CNS diseases (including neuropsychiatry but excluding neurovascular, neuro-oncology, and psychedelics)

Inflammation and Immunology

Novel tolerization strategies for managing immune-driven conditions (e.g. allergy, autoimmune disease, and transplant rejection)

Novel approaches for targeting memory T cells in immune-driven conditions

Metabolic Disease

Novel therapeutics or approaches that attenuate inflammation and/or prevent or reverse pathogenic tissue remodeling in any organ system.

[Learn more about this funding opportunity.](#)

[Submit your pre-proposal.](#)

CTSI UPDATES

Join us! Office for Human Research Protections (OHRP) Research Community Forum: Collaboration, Community and Connection: Partnering to Advance Research

Pitt's CTSI is joining forces with the University of Pennsylvania, Pennsylvania State University, and OHRP to sponsor this year's OHRP conference on September 9th and 10th. We will be welcoming local and national speakers for this virtual event. We look forward to presentations on e-consent technologies, artificial intelligence as it relates to research and research ethics, synthetic data sets, Human Centered Design, and more! Please join us for this virtual event. See our [website](#) for registration information.

Save the Date: CTSI+You Summit

Mark your calendars: the CTSI+You Summit will be held at Scaife Hall (3550 Terrace Street) on November 15 from 8 a.m. to 3 p.m. Breakfast and lunch will be provided.

Join us for live demonstrations of various programs including Pitt+Me, THREAD, and ENACT, and learn from a number of our funding awardees about how CTSI can help get your work funded. Meet with our Core Directors and Facilitators, learn how you can incorporate Human Centered Design, reciprocity with the community, and sustainability in research into your own work. And don't miss our plenary talk at noon with Dorit Donoviel, PhD, entitled "Translational Research Institute for Space Health." Stay tuned for more information about registration via CTSI [e-blasts](#).

New CTSI Funding Opportunities

CTSI is happy to announce two new funding opportunities offered in collaboration with partners:

The Women's Pain Research Challenge: Pitt CTSI is partnering with the [Magee Women's Research Institute](#) and the [Magee-Womens Summit](#) to offer \$150,000 in research funding. [The Women's Pain Research Challenge](#) is a funding program to advance innovative solutions and diverse teams that address either physiological or psychological aspects of pain in women. This can include the dynamics of pain, causes and alleviation of pain, and/or treatments to prevent or mitigate pain. The Women's Pain Research Challenge is sponsored by the Virginia Kaufman Endowment Fund. It is administered by Clinical & Translational Science Institute (CTSI) Innovation at the University of Pittsburgh.

Sustainability in Healthcare Challenge: The Office of Sustainability in the Health Sciences, Office of Multidisciplinary Innovations in the Health Sciences, the Clinical and Translational Science Institute (CTSI), and the Mascaro Center for Sustainable Innovation are introducing the [Sustainability in Healthcare Challenge](#) as the University of Pittsburgh's first funding opportunity to advance sustainability in healthcare. We invite you to submit proposals that align with our commitment to promoting environmental, economic, and social sustainability in healthcare.

REGULATORY NOTES

Office for Human Research Protections Conducting an Exploratory Workshop on Artificial Intelligence and Ethics

Save the date! On September 19, the Office for Human Research Protections (OHRP) is hosting an exploratory workshop: The Evolving Landscape of Research with AI: Putting Ethics into Practice. This workshop will explore what risks AI can pose, how we can prepare for and control these risks, how this might inform future policy, and the ethical and practical considerations for the use of AI in research.

This one day workshop will cover ethics and governance principles related to AI, the challenges of applying the Belmont Principles and the Common Rule to research involving AI, and the challenges of maintaining public trust and aligning AI with human values. No registration is required. Please see the OHRP [website](#) for the full agenda and information about how to join the livestream.

UPCOMING EVENTS

Thursday, September 5 | noon to 1 p.m.

[Responsible Conduct of Research Principles and Application](#)

Presented by the CTSI Responsible Conduct of Research Center

Virtual event

Friday, September 20 | noon to 1 p.m.

[Study Design](#)

Presented by the CTSI Responsible Conduct of Research Center

Virtual Event

Monday, October 7 | noon to 1 p.m.

[Innovating Multisite Study Recruitment with the Clinician](#)

[Study App](#)

Presented by the Trial Innovation Network

Virtual Event

Wednesday, October 16 | noon to 1 p.m.

[The EFIC Toolkit: How to Build a Community Consultation and](#)

[Public Disclosure Plan](#)

Presented by the Trial Innovation Network

Virtual Event

Recorded Webinar

[The Principles of the Belmont Report and Ethics in Human](#)

[Research](#)

Presented by the Office for Human Research Protections

Recorded Webinar

[Strategies for Recruitment and Retention of Gender and](#)

[Sexual Minorities](#)

Presented by the Trial Innovation Network

DEAR CTSI,

Question: Where can our research lab send new employees for education?

Answer: There are several resources available that provide education for research faculty and staff. Twice per year, CTSI holds a comprehensive Orientation to Research Fundamentals (ORF) training. Speakers from many different research-related university offices present on a range of topics, including recruitment and retention, the clinical research process, costs and billing in clinical trials, study documentation, and more. This year's ORF will be held over three half day sessions from October 2 -4. Registration will be available on our website; sign up for CTSI [e-blasts](#) to receive notification when registration opens.

The CTSI Responsible Conduct of Research Center provides educational presentations throughout the academic year. This year's sessions include: Community Partner Research Ethics Training, Describing and Defining Your Data, Ensure Rigor in Your Study Proposal and Conduct with Risk of Bias Tools, Crafting a successful "Approach" Section for NIH grants, Creating a Data Collection System, Enhancing Reproducibility Through Transparency in Reporting Experimental Details, and Institutional Conflicts of Interest. Click [here](#) for details.

[The Trial Innovation Network](#) offers free webinars on research related topics like recruitment, retention and using electronic medical records in research.

Other research related offices on campus, like the [Office of Research Protections](#), offer periodic training, and the University of Pittsburgh events [calendar](#) can also be searched using the keyword "research" for research related educational opportunities.

Questions for us?

We'd love to hear from you: ctsi@pitt.edu

Pitt+Me questions: ASKPPM@pitt.edu

Pitt CTSI
Clinical and Translational
Science Institute